



NJSD New High School • Community Meeting • December 9th



The image displays a detailed architectural site plan and floor plans for a large building complex. The plan shows a central 'SPIRIT CONCOURSE' with various rooms, corridors, and outdoor spaces. The layout is symmetrical and includes numerous smaller rooms, likely classrooms or offices, arranged around the central area. A red vertical bar is on the left side of the image.

SITE PLAN & FLOOR PLANS

FIRST FLOOR Schematic Plan
Scale: 1/8" = 1'-0"
DATE: 10/11/11

- ▣ CLASSROOM
- ▣ OFFICE
- ▣ CONCOURSE
- ▣ SERVICE

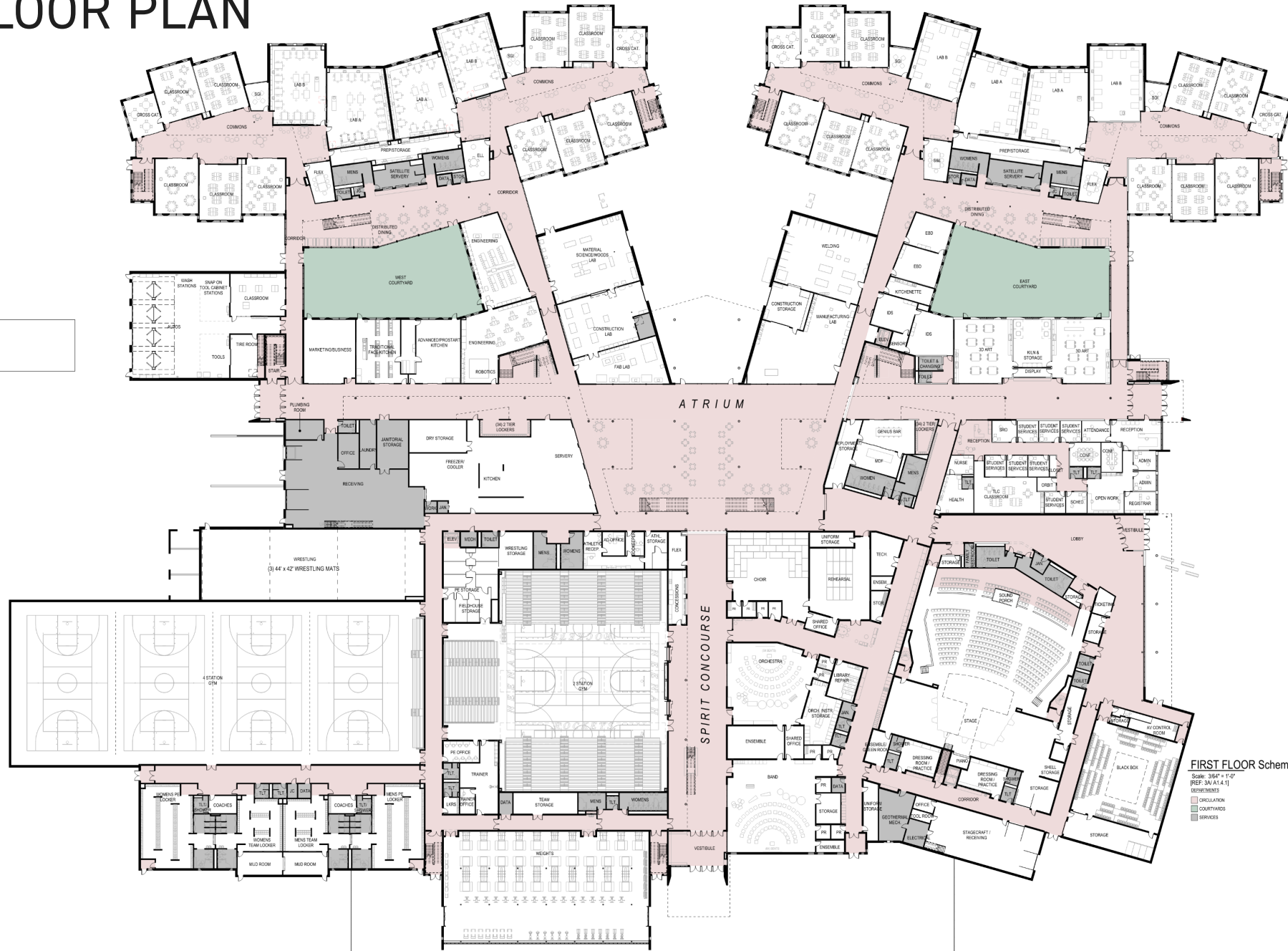
OVERALL SITE PLAN



ENLARGED SITE PLAN

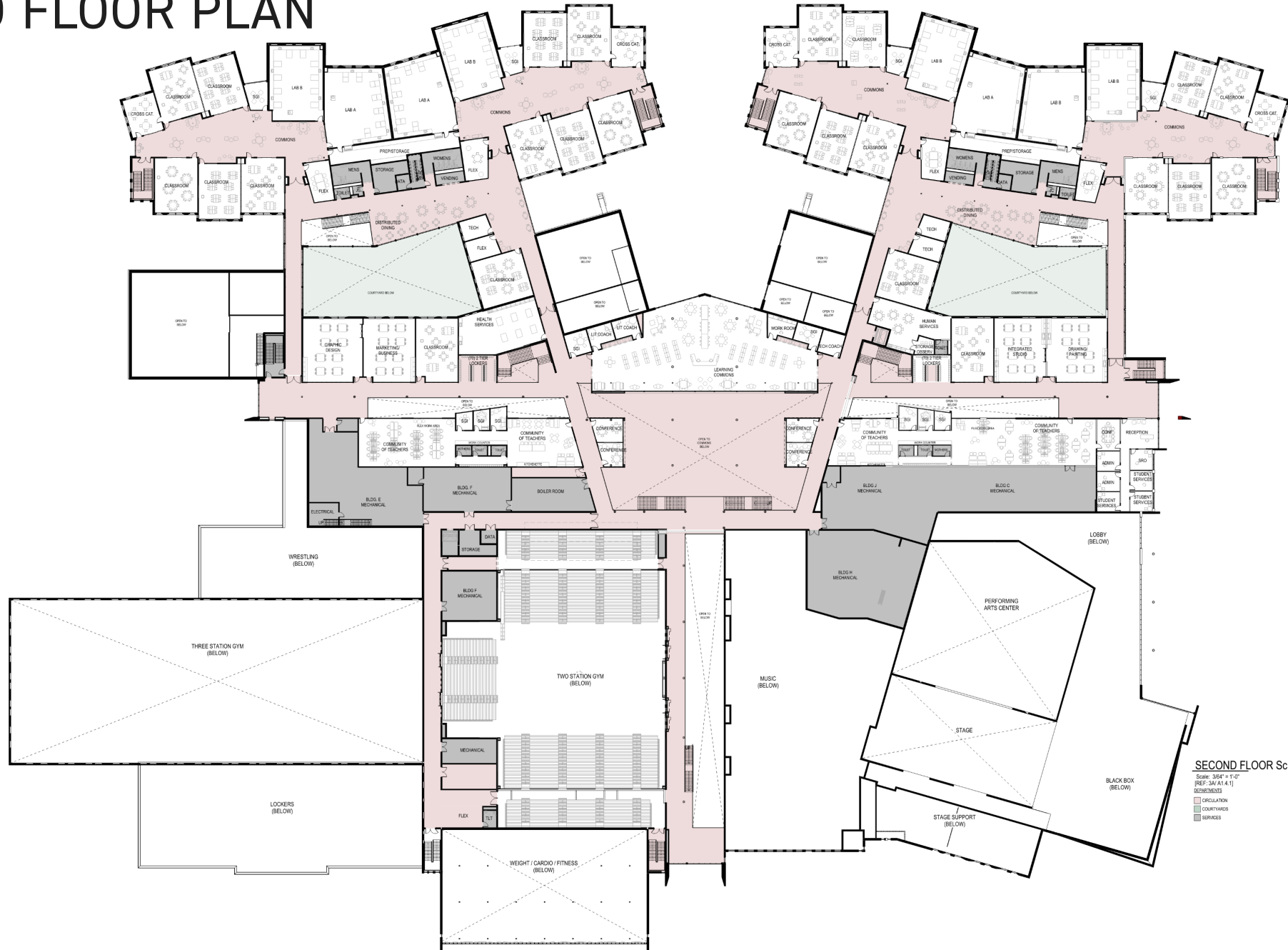


FIRST FLOOR PLAN



FIRST FLOOR Schematic Plan
 SCALE: 3/8" = 1'-0"
 REF: 3A(A1-4.1)
 DEPARTMENTS
 TEAM
 CONSULTATION
 COURTYARDS
 SERVICES

SECOND FLOOR PLAN



SECOND FLOOR Schematic Plan
 Scale: 3/8" = 1'-0"
 REF: SA-A1.4.1
 SCHEMATIC
 CIRCULATION
 COURTYARDS
 SERVICES

An architectural rendering of a modern school building exterior. The building features large glass windows and a prominent entrance structure. A paved walkway leads towards the building, with a person walking in the distance. The scene is set under a cloudy sky with birds flying. A solid red vertical bar is positioned on the left side of the image. The text "EXTERIOR DESIGN CONCEPTS" is overlaid in the center in a bold, black, sans-serif font.

EXTERIOR DESIGN CONCEPTS

EXTERIOR MATERIALS



Wood-look Composite Metal Panel



Aluminum-framed Glazing



Colored Composite Metal Panel



Brick Masonry



Textured Fiber Cement Panel



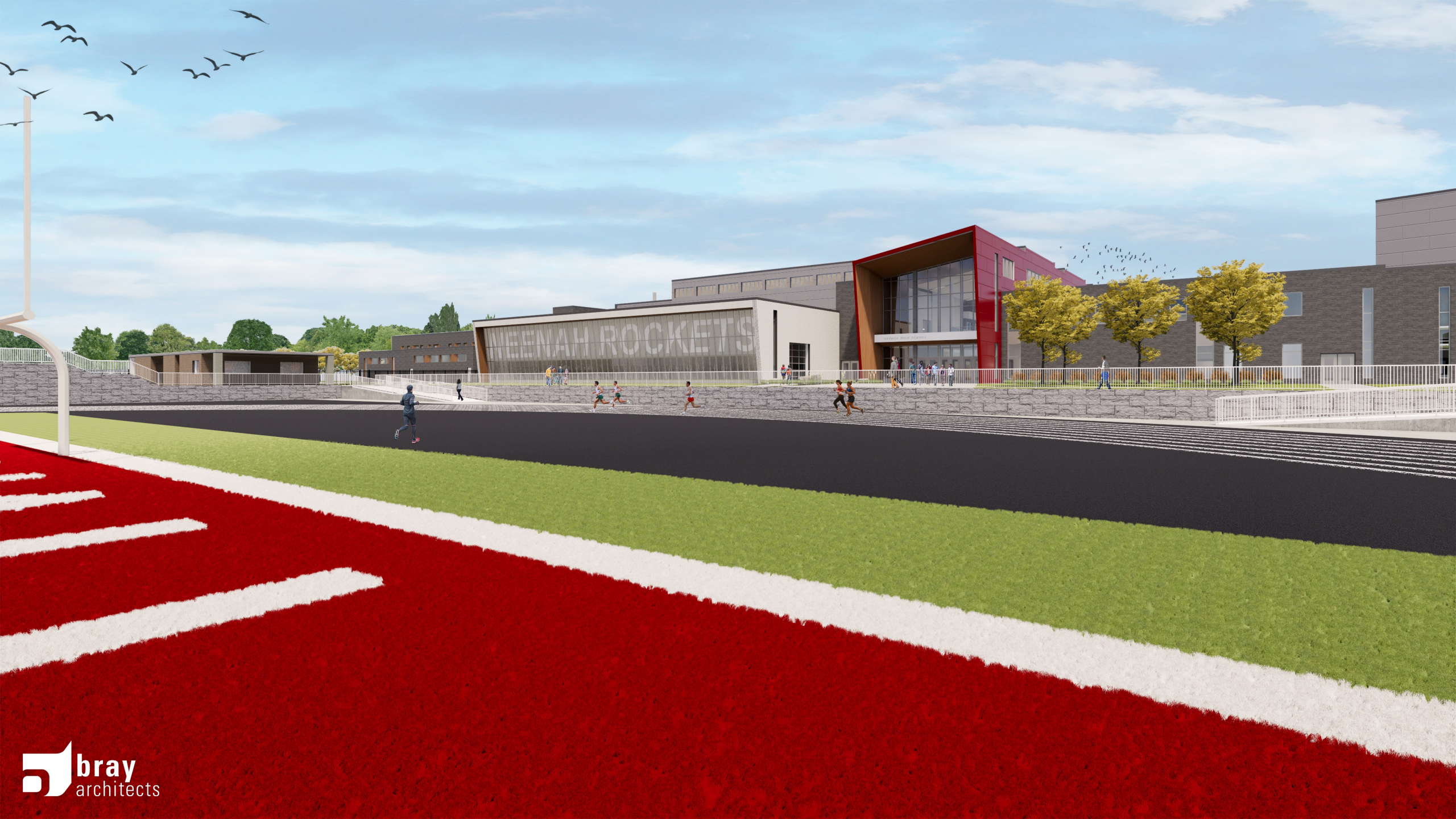


NEENAH HIGH SCHOOL











davenport • milwaukee • moline • sheboygan

brayarch.com

thank you.

